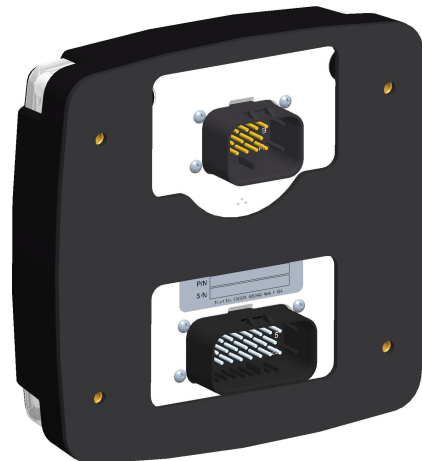


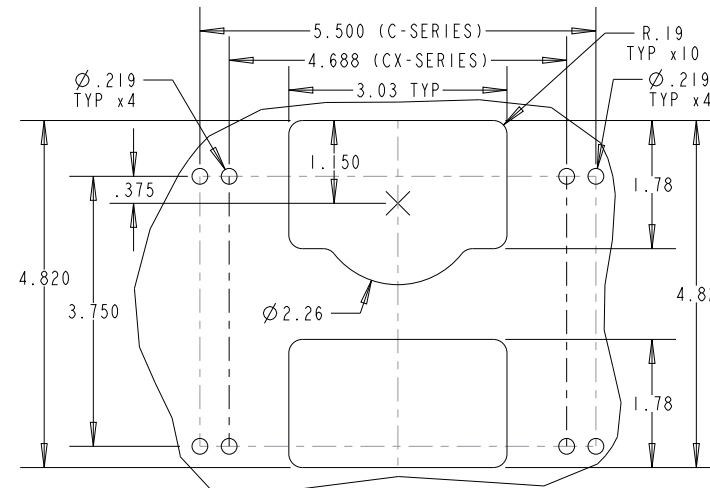
.09 (UNCOMPRESSED) GASKET, NOT SHOWN, ITEM 9-1037



CX-SERIES
SCALE 0.375



CX-SERIES
SCALE 0.375

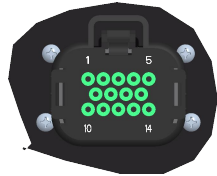


EXPANDED C-SERIES MOUNTING HOLE PATTERN, DETAIL C
SCALE 0.375

TOLERANCES ON DIMENSIONS UNLESS OTHERWISE SPECIFIED			
DECIMAL PLACE TOLERANCES	0.0 = ±0.060	WWW.CONTROLSINC.COM	330-239-4345
	0.00 = ±0.030	NEXT ASS'Y:	CX SERIES PANEL ASSEMBLY
	0.000 = ±0.010	DESCRIPTION:	CX-SERIES INSTALLATION REQUIREMENTS, RENDERED IMAGES
ANGLES:	XX = ±0.5°	MATERIAL:	REFERENCE BILL OF MATERIAL
DRAWING UNITS UNLESS SPECIFIED: INCHES		STATUS:	RELEASED
DRAWN BY: KLD	DATE: 20-Oct-20	DRAWING NUMBER:	
CHECKED BY:	DATE:	REV:	
MODEL: CX		SHEET: 1 OF 2	CX_SERIES
CONFIGURATION: ALL			

REV:	DATE:	BY:	DESCRIPTION:

**PCB CONNECTIONS
(PROVIDED CONNECTORS)**



DETAIL A
TYCO/AMP 14 PIN
PART # 776262-1
SCALE 0.500



DETAIL B
TYCO/AMP 23 PIN
PART # 776228-1
SCALE 0.500

**HARNESS
(REQUIRED CONNECTORS)**



776273-1 PLUG, TYCO/AMP (BLACK)
770854-1 SOCKET (TIN PLATED)
770854-3 SOCKET (GOLD PLATED)
770678-1 CAVITY SEAL
SCALE 0.500



770680-1 PLUG, TYCO/AMP (BLACK)
770854-1 SOCKET (TIN PLATED)
770854-3 SOCKET (GOLD PLATED)
770678-1 CAVITY SEAL
SCALE 0.500

CX SERIES INPUT/OUTPUT OPTIONS

PCB 8550-200, Version 1.0, BOM V1.0

CONNECTOR, 14 POSITION TYCO/AMP (TOP)

PIN	DEFAULT	OPTIONS
1	RELAY 2 (NO)	10 AMP
2	RELAY 1 (NO)	5 AMP
3	RELAY 3 (NO)	5 AMP
4	COMMON	RELAYS 2 & 4
5	RELAY 4 (NO)	10 AMP
6	COMMON	RELAY 1
7	CAN H	J1939
8	CAN L	J1939
9	COMMON	RELAY 3
10	ACC	ACCESSORY DETECT, IGNITION, CRANK
11	B+ IN	8-32 VDC
12	GND	None
13	AI 1	(12mA R), 4-20mA, 0-5 VDC
14	DI 1	None

CONNECTOR, 23 POSITION TYCO/AMP (BOTTOM)

PIN	DEFAULT	OPTIONS
1	RELAY 5 (NO)	5 AMP
2	AI 2	(12mA R), 4-20mA, 0-5 VDC
3	FA 1	Flex Analog, (4-20mA), 0-5 VDC
4	FA 3	Flex Analog, (4-20mA), 0-5 VDC
5	FREQ IN	None
6	DI 8	None
7	DI 9	None
8	RELAY 7 (NO)	5 AMP
9	COMMON	RELAYS 5 & 6
10	AI 3	(12mA R), 4-20mA, 0-5 VDC
11	FA 2	Flex Analog, (4-20mA), 0-5 VDC
12	FA 4	Flex Analog, (4-20mA), 0-5 VDC
13	MODBUS A	None
14	MODBUS B	None
15	COMMON	RELAYS 7 & 8
16	RELAY 6 (NO)	5 AMP
17	DI 2	None
18	DI 3	None
19	DI 4	None
20	DI 5	None
21	DI 6	None
22	DI 7	None
23	RELAY 8 (NO)	5 AMP

KEY

() Denotes Multiple Option Default Setting	
AI	Analog Input Low/High, Wetting Current Resistive, Current, Active Voltage
AO	Analog Output, 8 mA Max 0-5 VDC
DI	Digital Input Low/High, V Batt wetting current, close to GROUND
FA	Flex Analog, 4-20mA, 0-5 VDC
FREQ IN	MPU, Alt Tach or Sq Wave; 3 V Min

**TOLERANCES ON DIMENSIONS
UNLESS OTHERWISE SPECIFIED**

DECIMAL PLACE TOLERANCES	0.0 = ±0.060
	0.00 = ±0.030
ANGLES:	0.000 = ±0.010
	XX = ±0.5°

DRAWING UNITS UNLESS SPECIFIED: INCHES	
DRAWN BY: KLD	DATE: 20-0ct-20
CHECKED BY:	DATE:
MODEL: CX	
CONFIGURATION: ALL	



WWW.CONTROLSINC.COM	330-239-4345
NEXT ASS'Y:	CX SERIES PANEL ASSEMBLY
DESCRIPTION:	CX-SERIES, 14/23-PIN AMP PCB PIN CONFIGURATIONS

MATERIAL: REFERENCE BOM / DETAIL DWG	
STATUS: RELEASED	
DRAWING NUMBER:	REV:
CX_SERIES	-

REV:	DATE:	BY:	DESCRIPTION:
------	-------	-----	--------------