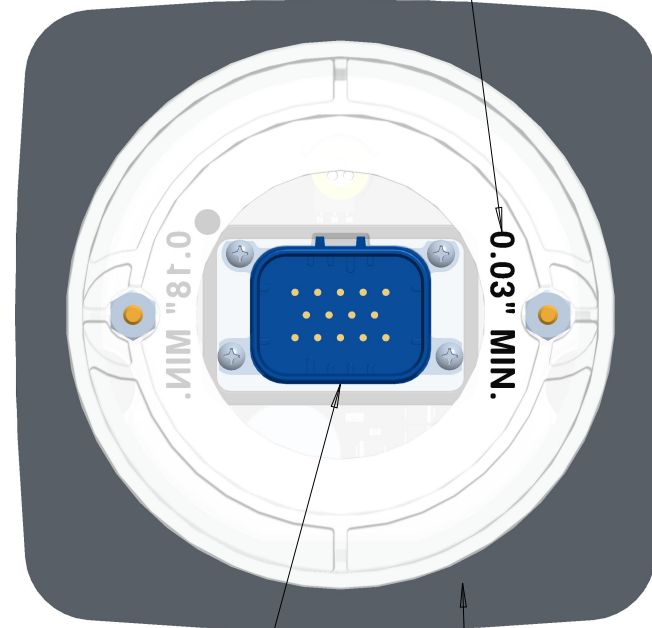




SCALE 0.750



SUPPLIED MOUNTING RING SUPPORTS-
MOUNTING PLATE THICKNESS AS FOLLOWS:
0.03" TO 0.24" (ORIENTATION SHOWN)
0.18" TO 0.39" (OPPOSITE SIDE)



SUPPLIED CONNECTOR:
TYCO/AMP 1-776262-5 (BLUE)
MATES WITH:
TYCO/AMP 776273-5 (BLUE)

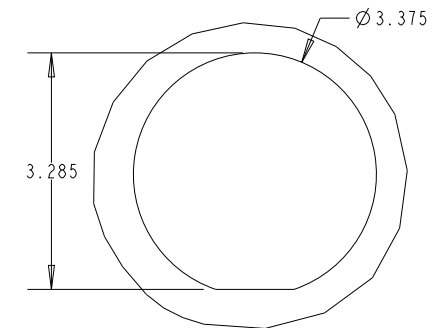
OPTIONAL GASKET
9-1034 SHOWN




CONTROLS MX GRAPHICAL SERIES
SCALE 0.500



CONTROLS MX GRAPHICAL SERIES
SCALE 0.500



RECOMMENDED
MOUNTING PATTERN
DETAIL C, SCALE 0.375

TOLERANCES ON DIMENSIONS UNLESS OTHERWISE SPECIFIED		 WWW.CONTROLSINC.COM 330-239-4345	
DECIMAL PLACE TOLERANCES	0.0 = ±0.060 0.00 = ±0.030 0.000 = ±0.010		
ANGLES:	XX = ±0.5°	DESCRIPTION:	MX GRAPHICAL ENCLOSURE INSTALLATION DRAWING
DRAWING UNITS UNLESS SPECIFIED: INCHES		MATERIAL:	REFERENCE BILL OF MATERIAL
DRAWN BY: KLD	DATE: 30-Aug-19	STATUS:	RELEASED
RELEASED: KLD	DATE: 20-Apr-2023	DRAWING NUMBER:	MX_SERIES
REV: A	DATE: 20-APR-2023	BY: KLD	DESCRIPTION: PAGE 2, PIN 3, 6, 10, 13 OPTION DESCRIPTIONS, KEY DO DESCRIPTION
MODEL:	MX	CONFIGURATION:	MX GRAPHICAL
REV:	DATE:	BY:	DESCRIPTION:

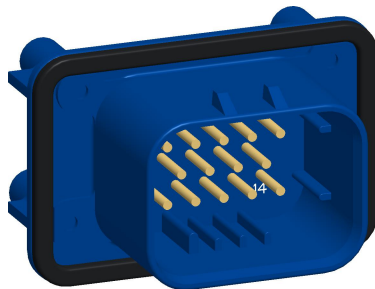
MX SERIES INPUT/OUTPUT OPTIONS

PCB 8100-100

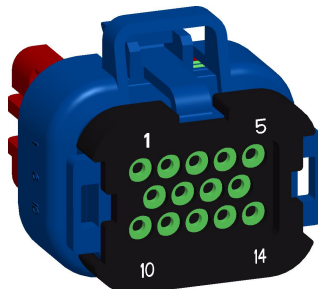
PIN	DEFAULT	OPTIONS
1	DO 1	None
2	DO 2	None
3	FREQ IN	5 VDC OUT
4	DO 3	MODBUS B
5	DO 4	MODBUS A
6	AI 3	Resistive (Default), 4-20mA, 0-5 VDC
7	CAN H	J1939
8	CAN L	J1939
9	DI 2	None
10	AI 2	Resistive (Default), 4-20mA, 0-5 VDC
11	B+	8-32 VDC
12	GND	None
13	AI 1	Resistive (Default), 4-20mA, 0-5 VDC
14	DI 1	None

KEY


DO	Digital Output, 2.5 Amp Max, Vbatt
FREQ IN	MPU, Alt Tach or Sq Wave; 3 V min
AI	Analog Input, Wetting Current Resistive, Current, Active Voltage
DI	Digital Input, V Batt wetting current; close to GROUND



776262-5
MODULE CONNECTOR
SCALE 1.000



776273-05
770854-1 TERMINAL, TIN PLATED
770854-3 TERMINAL, GOLD PLATED
SCALE 1.000

TOLERANCES ON DIMENSIONS UNLESS OTHERWISE SPECIFIED		 WWW.CONTROLSINC.COM 330-239-4345					
DECIMAL PLACE TOLERANCES	0.0 = ±0.060			NEXT ASS'Y:	MX SERIES PANEL ASSEMBLY		
	0.00 = ±0.030	DESCRIPTION:	MX MODULE, 14-PIN AMP, PIN CONFIGURATIONS				
	0.000 = ±0.010						
ANGLES:	XX = ±0.5°	DRAWING UNITS UNLESS SPECIFIED: INCHES					
DRAWN BY: KLD	DATE: 03-Sept-19	MATERIAL: REFERENCE BOM / DETAIL DWG					
RELEASED: KLD	DATE: 20-Apr-2023	STATUS: RELEASED					
A	20-APR-2023	KLD	PAGE 2, PIN 3, 6, 10, 13 OPTION DESCRIPTIONS, KEY DO DESCRIPTION	MODEL: MX	DRAWING NUMBER:	REV:	
REV:	DATE:	BY:	DESCRIPTION:	CONFIGURATION: MX GRAPHICAL	SHEET: 2 OF 2	MX_SERIES	-

A	20-APR-2023	KLD	PAGE 2, PIN 3, 6, 10, 13 OPTION DESCRIPTIONS, KEY DO DESCRIPTION
REV:	DATE:	BY:	DESCRIPTION: