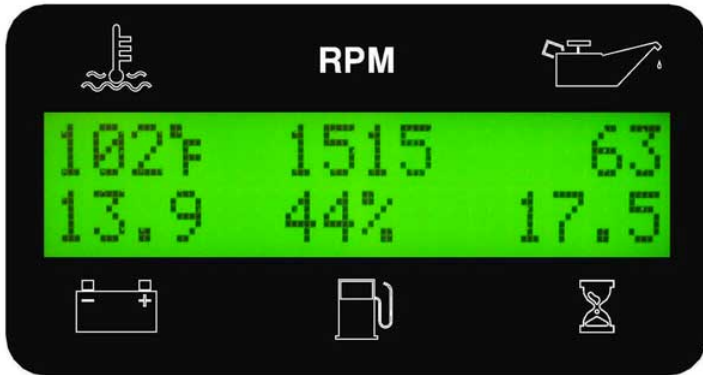


DESCRIPTION

The EngineMaster Plus™ EMT1 series is a microprocessor-based digital generator controller providing complete monitoring, and protection for mechanical engines. The large, backlit display provides complete, easy-to-read engine information on a full-time basis. The flexible product platform allows for customer specific features and functions.

DISPLAY

Large 1"H x 4"W backlit display with ½" characters.



ALARMS & SHUTDOWNS

Engine protection is provided with easy-to-read display messages and indication lamps (red and yellow) for alarm and shutdown conditions. Standard shutdowns for low oil pressure and high water temperature.



ENCLOSURE

The enclosure is water tight, constructed of durable, polycarbonate plastic with an industrial overlay of autotext polyester. This heavy-duty package provides protection and longevity for off-highway industrial applications exposed to vibration, UV, chemicals, solvents, diesel fuel, oil, etc.

BUTTONS

Large tactile dome buttons to insure positive feedback for operators with gloves.

CONNECTOR

A water tight 16-pin connector is utilized for simple plug-in installation.

SUMMARY

- Robust design & construction for heavy-duty, off-highway applications
- Easy-to-read, simple-to-operate
- Engine harnesses available for simple plug-in installation
- Manual and auto start versions available
- Digital inputs configured per customer requirements
- Emergency stop button can be added per customer request
- For both 12V and 24V systems



SPECIFICATIONS

GENERAL

OPERATING VOLTAGE.....	7.5VDC to 36VDC
MAXIMUM POWER CONSUMPTION.....	200mA
OPERATING TEMPERATURE.....	-20°C to +70°C
STORAGE TEMPERATURE.....	-30°C to +80°C
HUMIDITY.....	95% Non-condensing
REVERSE POLARITY PROTECTION.....	Yes
TRANSIENT VOLTAGE SUPPRESSION.....	Yes
DISPLAY.....	LCD, 1"H X 4"W, 2 lines x 16 characters/line
ENCLOSURE.....	Polycarbonate Plastic
OVERLAY/INTERFACE.....	Autotex Polyester
PANEL FUSE.....	10A
APPROX. WEIGHT.....	4.5 lbs
APPROX. DIMENSIONS.....	10.5"H x 8.5"W x 5.5"D

INPUTS

Analog Inputs

TEMPERATURE INPUT.....	Stewart Warner Scale 0-1000 Ohms
OIL PRESSURE INPUT.....	Stewart Warner Scale 33-240 Ohms
FUEL LEVEL INPUT.....	Stewart Warner Scale 33-240 Ohms
SPEED SENSOR INPUT.....	Magnetic Pickup or Alternator Tach Output

Digital Inputs

EMERGENCY STOP (Normally Open).....	1
DIGITAL INPUTS (Normally Open).....	3
<i>(Low Water Level, Low Oil Level, Low Fuel Level – Modified per customer request)</i>	

OUTPUTS

AUX RELAY OUTPUT.....	5A Form A
PRE ALARM OUTPUT.....	5A Form A
ALARM OUTPUT.....	5A Form C

Extreme Cold Weather Option

OPERATING TEMPERATURE.....	-45°C to +85°C
STORAGE TEMPERATURE.....	-55°C to +95°C

ACCESSORIES

For a complete installation, engine harnesses, extension harnesses and other accessories such as water temperature senders, oil pressure senders, magnetic pickups and current transformers are available. In addition, components such as relays, fuses, connectors and communication modules can be installed at the factory per customer request.