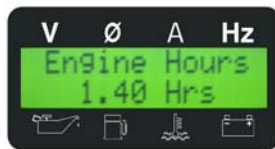
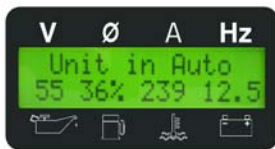
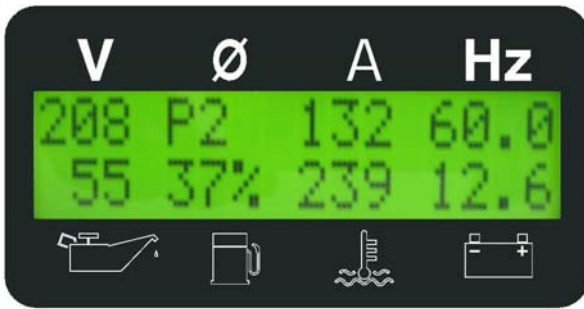


DESCRIPTION

The GenMaster Plus™ series is a microprocessor-based digital generator controller providing complete monitoring, control, and protection for both mechanical and SAE J1939 electronic engines. The large, backlit display provides complete, easy-to-read engine and generator information on a full-time basis. The flexible product platform allows for customer specific features and functions.

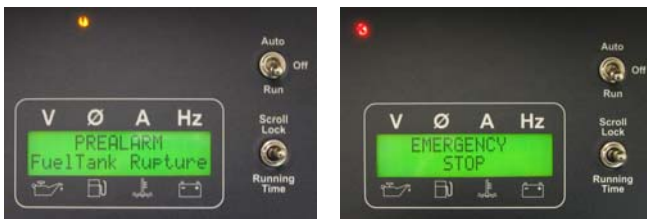
DISPLAY

Large 1"H x 4"W backlit display with ½" characters.



ALARMS & SHUTDOWNS

Engine and generator protection provided with easy-to-read display messages and indication lamps (red and yellow) for alarm and shutdown conditions. For SAE J1939 electronic engines, the controller serves as a trouble code reader displaying both active and stored pre alarm and fault codes.



ENCLOSURE

The standard enclosure is a 10"H x 14"W x 10" D powder coated steel enclosure. Other enclosure options are available.

SWITCHES

Three toggle switches are standard for Auto/Off/Run, Scroll Lock/Running Time and Speed Select (Run/Idle). Four membrane switch buttons are provided for accessing information and unit configuration. Additional options are available such as emergency stop or other customer specific buttons.

ACCESSORIES

For a complete installation, engine harnesses, extension harnesses and other accessories such as water temperature senders, oil pressure senders, magnetic pickups and current transformers are available. In addition, components such as relays, fuses, connectors and communication modules can be installed at the factory per customer request.

SPECIFICATIONS

GENERAL

OPERATING VOLTAGE.....	7.5VDC to 36VDC
MAXIMUM POWER CONSUMPTION.....	200mA
OPERATING TEMPERATURE.....	-20°C to +70°C
STORAGE TEMPERATURE.....	-30°C to +80°C
HUMIDITY.....	95% Non-condensing
REVERSE POLARITY PROTECTION.....	Yes
TRANSIENT VOLTAGE SUPPRESSION.....	Yes
DISPLAY.....	LCD, 1"H X 4"W, 2 lines x 16 characters/line
ENCLOSURE.....	Powder Coated Steel
OVERLAY/INTERFACE.....	Autotex Polyester
PANEL FUSE.....	10A
APPROX. WEIGHT.....	14.5 lbs
APPROX. DIMENSIONS.....	10"H x 14"W x 10"D

ELECTRONIC ENGINE INPUTS

ENGINE COM PORT.....	CANBus J1939 Protocol
----------------------	-----------------------

MECHANICAL ENGINE INPUTS

TEMPERATURE INPUT.....	Stewart Warner Scale 0-1000 Ohms
OIL PRESSURE INPUT.....	Stewart Warner Scale 33-240 Ohms
FUEL LEVEL INPUT.....	Stewart Warner Scale 33-240 Ohms
SPEED SENSOR INPUT.....	Magnetic Pickup or Alternator Tach Output

GENERATOR INPUTS

VOLTAGE INPUTS.....	(3) 0-600VAC
CURRENT TRANSFORMER INPUTS.....	(3) 5A
FREQUENCY INPUT.....	50Hz or 60Hz

DIGITAL INPUTS

EMERGENCY STOP (Normally Open).....	1
DIGITAL INPUTS (Normally Open).....	3
<i>(Low Water Level, Low Oil Level, Low Fuel Level – Modified per customer request)</i>	

OUTPUTS

RUN OUTPUT.....	10A Relay
CRANK OUTPUT.....	10A Relay
PRE ALARM OUTPUT.....	10A Relay
ALARM OUTPUT.....	10A Relay
REMOTE ANNUNCIATION COM PORT.....	Serial RS485

Extreme Cold Weather Option

OPERATING TEMPERATURE.....	-45°C to +85°C
STORAGE TEMPERATURE.....	-55°C to +95°C

OPTIONS

- Remote annunciator with duplicate display and start/stop
- Digital or analog inputs configured per customer request
- Interconnectivity to external communication systems & modules
- Extreme cold weather option